



fill the present day with joy
prelude to a YouOpera

instrumental part

please see full score for additional information

Fill the Present Day with Joy

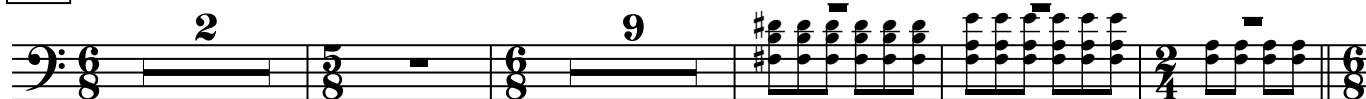
Cello

Prelude to a YouOpera

Ruben Naeff

Cello arrangement. Original written for the Music11 Summer Festival

Intro ♩. = 62



Sec. 1.h.

Wordsworth

16 arco

20 *pp*

24

27

30

33

36 *pp*

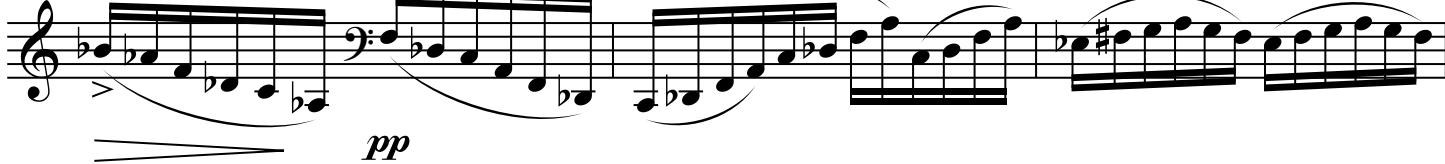
39

The main section of the score, labeled 'Wordsworth', spans from measure 16 to 39. It is written in bass clef with a key signature of one sharp (F#). The notation includes various musical elements such as slurs, accents, and dynamic markings. The piece begins with a 'Wordsworth' section starting at measure 16, marked 'arco'. The tempo is indicated as 'Sec. 1.h.'. The dynamics range from 'pp' (pianissimo) to 'pp' (pianissimo). The notation includes various musical elements such as slurs, accents, and dynamic markings. The piece concludes with a final measure at measure 39.

Prelude to a YouOpera

2

42



45



48



52



55

Ihnen arco



59



62



66



♩ = ♩ (♩ = 94)

69



Jessica Atkins to Megan Ihnen

Prelude to a YouOpera

3

73

3

Soprano



pizz. like a guitar (OK to follow chords and not exact fingering)
(note continuous pulse)

77

sim.

don't roll accented double stops

let vibrate

mp

sfz

80

mf

sfz

83

mf

sfz

86

sfz

89

sfz

92

sfz

96

sfz

99

mf

sfz

sfz

Chord progression and musical notation for measures 77-99. The notation includes various chords (F, C, D^b, B^bm6, E^b, F, C m7, D^b/G, B^bm6, E^b, G, F, C, D^b, B^bm6, D^b, E^b, F, E^b, Em, A7, G7, G^bM7, D m, E m, E7, A^b, B7, D^b/G, B^b/G, E^b, A7, G7, F[#]M7, D^b, B^bm6, E^b, F, C m7, C m7, D^b/G, B^bm6, E^b, A7, G, F, C, D^b), dynamics (*mp*, *mf*, *sfz*), and articulations (accents, slurs, triplets, double stops). The piece concludes with a final double bar line and a repeat sign.

Prelude to a YouOpera

6

187



190



194



197



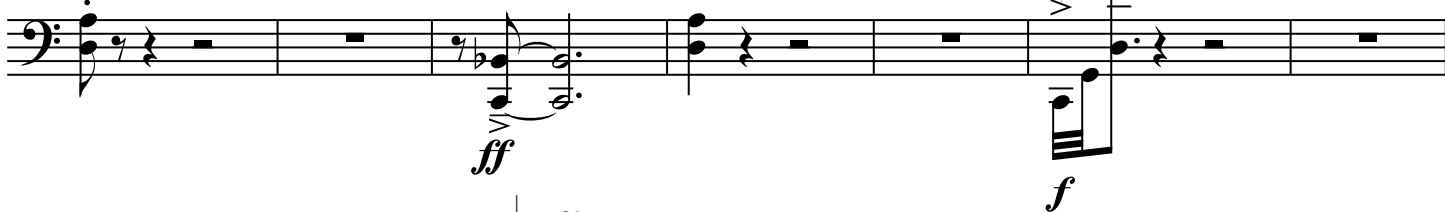
201



206



214



221

